

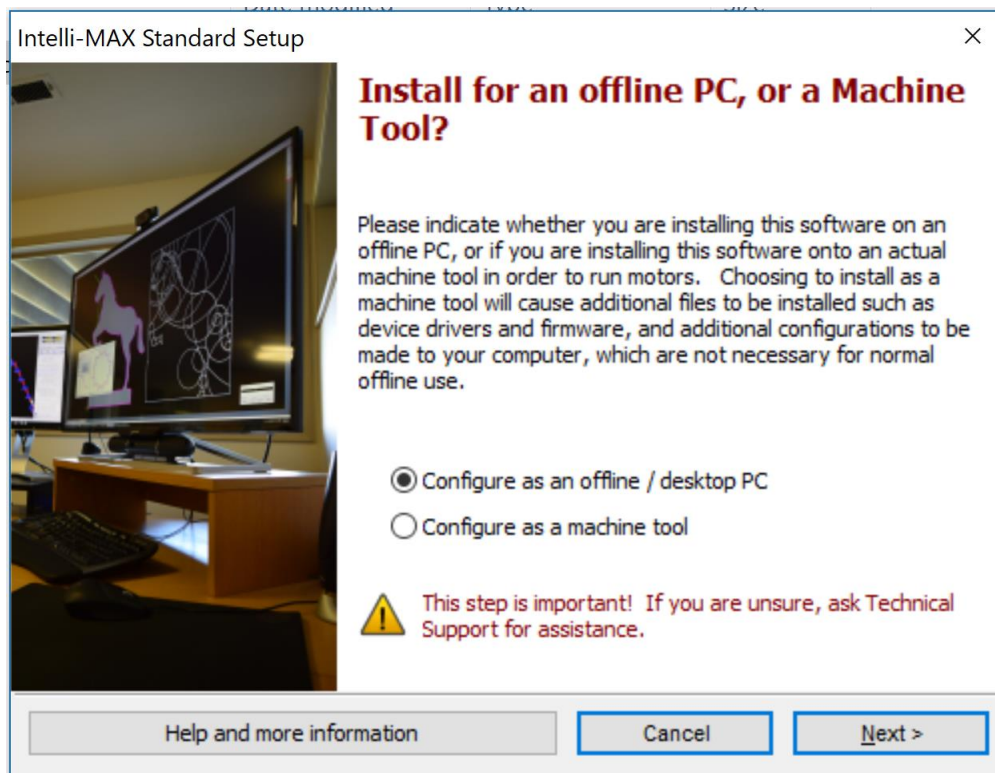
Georgia *FIRST* Manufacturing Partnership

This is the software procedure for the OMAX Waterjet that will allow you to check your design for correctness.

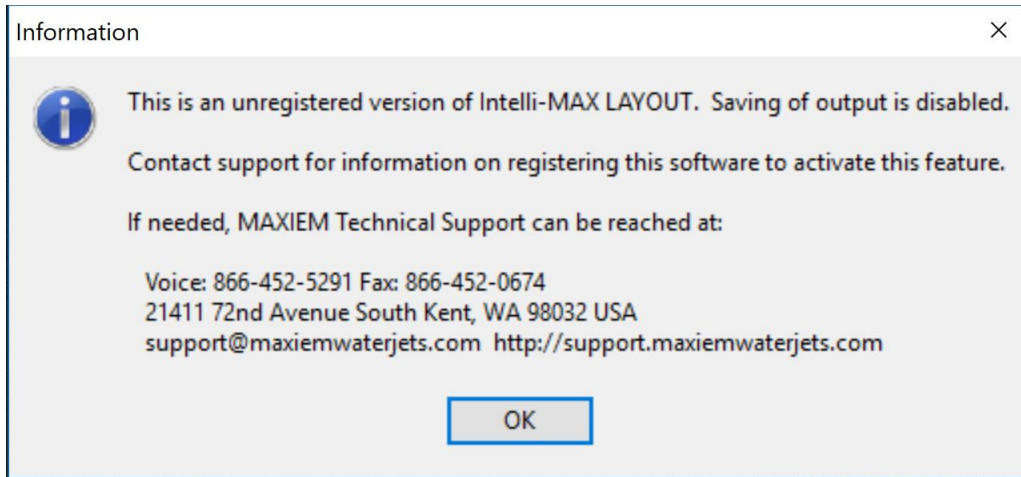
Follow the following steps.

1. Send an email to edbarker@kennesaw.edu to get a dropbox link to the software, after receiving the link, continue with the following steps.
2. Download the software from the GFMP dropbox - Intelli-MAX_Standard_EnglishUSA_Setup_V25.0
3. Extract the software
4. run the installer
5. Install as 'offline PC'
6. registration – **DO NOT CONTACT OMAX** – contact Ed Barker using the following procedure
7. click **REGISTER SOFTWARE** on menu bar of **MAKE** program, not **LAYOUT**
8. Software activation procedure
9. MAKE software configuration

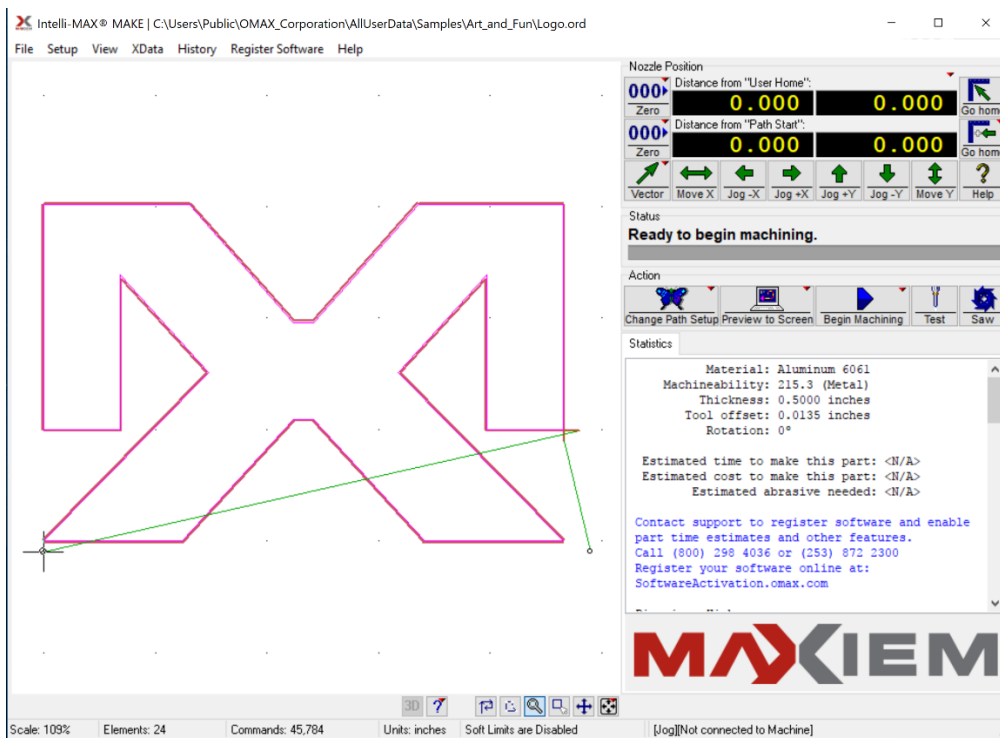
STEP 4



STEP 5



STEP 6



STEP 7

Get the code from the dialog below, 51086 in this example.

Email this code to edbarker@kellrobotics.org

Close the MAKE program for now.

When you receive the PASSWORD from the email, reopen MAKE, click REGISTER SOFTWARE on the top menu, and enter the password.

The product will then be active.

Register Software: Intelli-MAX® Standard

To use the job costing and part time estimating features in this software, or to use this software to control a machine tool, you must first register your software with OMAX. Permanent registration is only available to OMAX customers.

Step 1

Click here to visit SoftwareActivation.omax.com, to enter the code below

Intelli-MAX® Standard: 51086

Step 2

Carefully enter the password supplied here:

Step 3

Press this button. It will activate when a correct password is entered: Done!

Cancel Help

Intelli-MAX® Standard version: 25.0



STEP 8

Training can be offered online via skype, at the annual GeorgiaFIRST Symposium at Georgia Tech, at Kell Robotics by appointment, or some friendly person that you know that has mastered the product.